



USBCO Steels Pvt. Ltd.





INTRODUCTION

USBCO STEELS PVT LTD has been in the engineering business since 1960 and has built a reputation for supplying quality products at the right prices to customers across the country.

Our modernized product programme seeks to augment product quality and better fulfil customer requirements. Our product mix for pneumatic tools includes **(1) Rock Drill (2) Grinder (3) Demolition Tools (4) Drill Steels for rock drilling (5) Airline Lubricators (6) Air Legs, etc....**



HAND GRINDER

The unique design of range of Hand Grinders provides maximum operation comfort for the operator due to its improved rpm range and power : weight ratio ensures efficiency and precision. This grinder find use in furniture, panel and allied fabrications, home appliances, aircraft and ship building industries.



GRINDERS

DIE GRINDERS

This product is designed for optimum use in the foundry, ship building and construction industries, die & foundry shops.

A high power motor maintains a high speed while under load. The steel housing braves rugged and tough use. These grinders are best used for Die contouring and repairing, cleaning welds, forging dies & casting moulds, etc..

HEAVY DUTY GRINDERS

This range of products also finds use in the foundry, ship building and construction industries, power plants & oil refineries.

Notable features of this range are the hardened and ground motor parts, a high corrosion resistant governor. These grinders find applications in smoothing welds & forgings, heavy duty grinding & cleaning of castings.





ROCK DRILLING

Rock Drill ensures faster drilling speed, robust rotation & optimum hole cleaning capability. These versatile drills find applications in blast hole drilling, shaft sinking, tunnelling, quarry, road work & general excavation.

565 L DRILL (DRY)

This sturdy 24 kg drill is not only the most practical & reliable tool in the market, but also easy to operate - it moves smoothly & performs effectively. Less operational time means more profits for the contractor!

566 W DRILL (WET)

Similar to 565, this drill has been modified to suit wet drilling requirements. When used with pneumatic pusher & super drill steels, the combination results in super efficient drilling, tunnelling or any other type of underground operation, horizontal or inclined.



565 L DRILL (DRY)



566 W DRILL (WET)

Technical Data

Model	Type	Weight in Kg	Air Requirement		Piston diameter MM	Piston Stroke MM	Impact per Min	Drilling Rate* MM/Min	Hose Connection	
			(at 6 Bar) m ³ /Min	(87 psi) Cfm					Air MM	Water MM
565 L	Dry	25.00	2.9	101	65	60	2050	410	19	12.5
566 W	Wet	25.70	3.4	119	65	60	2000	425	19	-

* Drilling rate of 33 mm drill bit at an pressure of 6 kg/cm²



HAND HELD DRILL

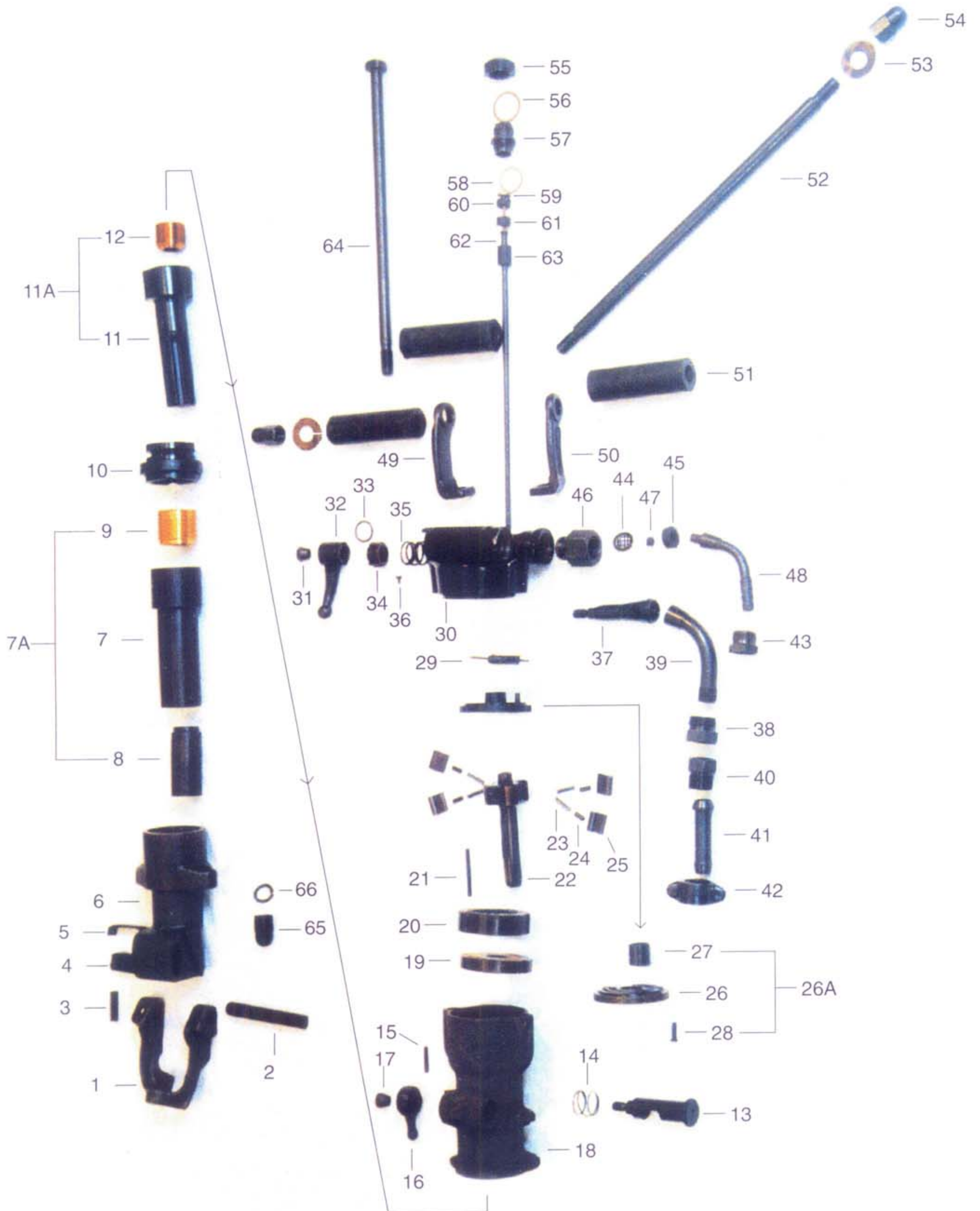
Best suited for a variety of surface drilling operations in mines and quarries, This versatile Rock Drill is ideal for medium & Continuous drilling.

Although, light in weight this is a heavy duty air flushed Rock Drill & can make holes upto 6 metre depth & 27 to 40 mm dia using 22 mm Hex Drill Rod.

Specifications

Model	Type of handle	Type of throttle	Chuck Size	Type of retainer	Approx. length mm.	Approx. wt. kgs.	Air Inlet connection
HHD Dry	'T'	Handle on Back Head	22.2 mm Hex 108 mm	Beaver tail	578.0	24.7	20 mm (3/4") Hose end

Rock Drill - 566



SPARE PARTS WHICH SHOULD BE KEPT IN STOCK



SPARE PARTS LIST

Ref. No.	Description	Part No.	Ref. No.	Description	Part No.
1.	Retainer	2868-0851	33.	'O' Ring	2892-2128
2.	Retainer Pin	2869-0852	34.	Lock Washer	2893-0332
3.	Elastic Pin	2970-3389	35.	Spring	2894-0136
4.	Rubber Buffer	2871-0029	36.	T-Pin	2895-0329
5.	Buffer Plate	2872-0030	37A.	Valve Wet	2896-0331
6.	Front Head	2873-0342	37.	Valve Dry	2897-0349
7A.	Rotation Chuk, Comp.	2879-079-80	38.	Adopter	2890-1370
7.	Rotation Chuk	2879-0769	39.	Elbow	2890-1377
8.	Chuk Bushing	2887-0123	40.	Adopter	2891-0350
9.	Chuk Nut	2877-0134	41.	Hose Nipple	2891-0325
10.	Intermediate Part	2884-0339	42.	Wing Nut	2891-0338
11A.	Piston Comp.	2878-8478-80	43.	Adopter Wet	2807-0010
11.	Piston	2878-8478	44.	Strainer Wet	2808-0011
12.	Rifle Nut	2876-9929	45.	Packing Wet	2808-0012
13.	Outlet Valve	2892-9949	46.	Adopter Wet	2809-52
14.	Spring	2893-0338	47.	Rubber Packing Wet	2810-6953
15.	Pin	2894-1330	48.	Hose Nipple Water Wet	2811-6954
16.	Lever Bottom	2894-9950	49.	Handle Bracket (R)	2880-0345
17.	Conical Nut	2895-8734	50.	Handle Bracket (L)	2880-0344
18.	Cylinder	2896-0337	51.	Rubber Grip	2881-1372
19.	Guide Disk	2897-8683	52.	Handle Bolt	2861-0360
20.	Ratchet Ring	2898-8682	53.	Washer	2862-0911
21.	Guide Pin	2899-7146	54.	Dome Nut	2863-292
22.	Rifle Bar	2875-3154	55.	Protective Nut	2863-9643
23.	Pawl Spring	2801-9140	56.	Seal Washer (L)	2864-4146
24.	Pawl Pin	2802-9641	57.	Adopter	2865-9632
25.	Pawl	2802-3159	58.	Seal Washer (S)	2866-9314
26A.	Cover Comp.	2885-8906-80	59.	Water Tube Wet	2867-855
26.	Cover	2885-8906	60.	Rubber Packing Wet	2868-122
27.	Bushing	2887-9894	61.	Guide Ring Wet	2869-766
28.	Guide Pin	2888-9665	62A.	Air Tube Wet	2850-2800
29.	Main Valve	2886-8618	62.	Air Tube Dry	2851-532
30A.	Back Head Wet	2889-0333	63A.	Rubber Packing Wet	2852-121
30.	Back Head Dry	2890-0351	63.	Rubber Packing Dry	2853-633
31.	Conical Nut	2895-8734	64.	Side Bolt	2882-0443
32.	Leaver Top	2801-0003	65.	Dome Nut	2867-9643
			66.	Spring Washer	2883-0444

ROCK DRILLS 566 L & 565 W



ROCK DRILL STEELS

Today's drill Steels meet with a succession of hard percussive blows ranging from 2000 to 3000 blows per minute resulting in compressive and tensile shock wave, ultimately fatigue stresses. Moreover, oblique blows on the struck surface or the drill steel being bent during the operation, result in bending stresses.

Our drill steels are conditioned to withstand both fatigue and bending stresses by a specific method which ensures even distribution of the compressive stresses through the layers of the drill steels...

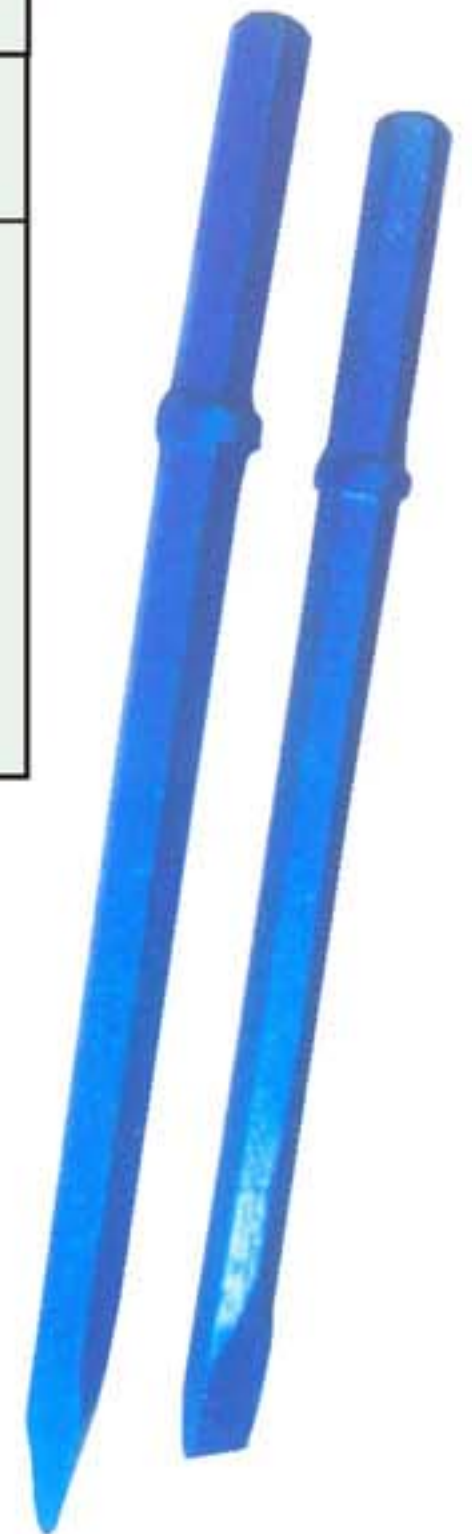
Our drill steels have an unusually high level of fatigue strength to withstand corrosion of failure. The special treatments for the drill steel ensure protection against rust during usage, normal shelf storage or transportation.

We ensures the quality of its drill steels by using the best and pure raw material which remain free of porosity and metallurgical defects during manufacture.

PRODUCT DATA

7/8" HEXAGON INTEGRAL STEELS

Series	Effective Length mm ft in	Bit Diameter mm in	Series	Effective Length mm ft in	Bit Diameter mm in
Type-01	0800 2 7	34 1 ¹¹ / ₃₂	Type-02	0800 2 7	40 1 ³⁷ / ₆₄
	1600 5 3	33 1 ¹⁹ / ₆₄		1600 5 3	39 1 ¹⁷ / ₃₂
	2400 7 10	32 1 ¹ / ₄		2400 7 10	38 1 ¹ / ₂
	3200 10 6	31 1 ⁷ / ₃₂		3200 10 6	37 1 ²⁹ / ₆₄
	4000 13 1	30 1 ³ / ₆₀		4000 13 1	36 1 ²⁷ / ₆₄
	4800 15 9	29 1 ⁹ / ₆₄		4800 15 9	35 1 ³ / ₈



Hexagon width over flats : 22.2 mm (7/8")

Flushing hole diameter : 6.7 mm (17/64")

Drill steels in other length & other bit diameters can also be supplied on specific requirements.

ASSESSORIES FOR DEMOLITION TOOLS

Type	Shank size/s, mm (in)	Available in lengths, under collar
Moil Point	31.7 (1 ¹ / ₄ ") hex or 28.6 (1 ¹ / ₈ ") hex	305 (12"), 380 (15"), 460 (18") or 610 (24")
Chisel Point	31.7 (1 ¹ / ₄ ") hex or 28.6 (1 ¹ / ₈ ") hex	305 (12"), 380 (15"), 460 (18") or 610 (24")

All tools made from best available alloy steels duly harden and tempered.



ROCK DRILL STEELS

Intended for the lubrication of compressed air-driven machines. This product is designed for a working pressure of 10 kg/sq.cm. (142 psi) and can be effectively used with an air flow of 1.5 to 8m³/min (53 to 282 cfm).

Suitable for : Rock Drill, Pavement Breaker, Impact-wrench, Pusherleg, Heavy Duty Steel Drill, Sump Pump, Vibrator, Rivetter.

Technical Data

Oil Liters 1.3	Capacity (Imp. gals) (0.29)	Weight Kg (lb) 3.0 (6.6)	Air flow m ³ /min. 1.5-8.0	Capacity (cfm) (53-282)	Hose Connection 3/4"-1"
-------------------	--------------------------------	-----------------------------	--	----------------------------	----------------------------



AIR LEGS

Our Air Legs provide maximum freedom to operate under any conditions while giving increased footage in digging and tunneling operations which are rendered free of interruptions due to a sturdy design resulting in minimum maintenance costs.

The Air Leg as a hand-operated valve positioned at the air-inlet to control the feed-pressure while a push button operated valve allows disengagement of the feed pressure.

These legs are mated for our series of Rock Drills by a simple connection of an attachment mounted on the side bolts. A carrying handle allows easy manual transportation.

FEATURES :

- Quick setting up
- One-man operation
- Reduces manpower fatigue
- Provides long life for the drill steel
- Minimises wear & tear of the Chuck

Model	Length	Feed length	Piston Dia	Air inlet Connection	Approx. Weight
Air Leg	1825 mm	1300 mm	53 mm	12.7 mm	21 Kgs.





DEMOLITION TOOLS

Demolition Tools are made from rugged forging of wear resistant alloy steel with treated parts, which provide longevity. Designed for minimum recoil and maximum air economy. Air exhaust from these tools is directed downwards and away from the operator.

Technical Data

	Standard Hex. Chuck size	Type of Retainer	Approx. o/all length (mm)	Approx. Weight kgs.	Air Inlet Connection
Demolition Tool	31.8 x 152.4 mm	Spring	730	35.7	³ / ₄ " BSPF Male Swivel

AIR HOSE FITTINGS

		TECHNICAL DATA					
	Claw couplings with male thread. Can be mated with any size of claw coupling-short length and large bore.	Part No.	Male B.S.P. Thread in	Bore approx.		Weight	
				in	mm	lb.	kg.
		1600 0300	3/8*	7/16	11.2	0.24	0.11
		1600 0301	1/2	37/64	14.8	0.26	0.12
		1600 0302	3/4	3/4	19.0	0.28	0.125
1600 0303	1	1	25.5	0.28	0.13		
	Claw couplings with female thread. Capable of being mated with any size of claw coupling-short length and large bore.	Part No.	Female B.S.P. Thread in	Bore approx.		Weight	
				in	mm	lb.	kg.
		1600 0304	3/8*	19/32	15.00	0.26	0.12
		1600 0305	1/2	47/64	18.6	0.30	0.135
		1600 0306	3/4	15/16	24.0	0.31	0.14
1600 0307	1	1	25.5	0.33	0.15		
	Claw couplings with hose nipple. Uniform size of claws permits mating of different sizes of claw coupling.	Part No.	Hose Nipple in	Bore		Weight	
				in	mm	lb.	kg.
		1600 0308	1/4*	7/32	5.3	0.24	0.11
		1600 0309	3/8*	23/64	9.0	0.26	0.12
		1600 0310	1/2	15/32	12.0	0.28	0.125
		1600 0311	5/8*	9/16	14.2	0.28	0.13
		1600 0312	3/4	43/64	16.9	0.28	0.125
1600 0313	1	29/32	23.1	0.28	0.13		
	Hose jointing nipple. Made of steel with a maximum bore area. Dimensions from 1" and downwards have one locking edge at each end, larger dimensions have two locking edges at each end for use with double hose clamps.	Part No.	For Hose in.	Bore			
				in.	mm.		
		1600 0214	1/4*	7/32	5.7		
		1600 0215	3/8*	3/8	9.0		
		1600 0216	1/2	15/32	12.0		
		1600 0217	5/8*	9/16	14.2		
		1600 0218	3/4	21/32	16.9		
		1600 0219	1	29/32	23.1		
		1600 0220	1 1/2	34.2	1-11/32		
		1600 0221	2	45.4	1-25/32		
1600 0222	2 1/2	56.0	2-7/32				
	Hose Clamps made of malleable cast iron-shaped to provide a good joint and tightened by a standard hexagon screw and nut.	Part No.	Inner Dia in.	For Hose with Outer Dia			
				in.	mm.		
		1600 0194	1/2	7/8--1	22.5--25.5		
		1600 0196	3/4	1-5/32--1-9/32	29.5--32.5		
1600 0197	1	1-15/32--1-9/16	37.0--40.0				
	Coupling washer packings. Made of rubber resistant to oil and temperature. One packing is required for each coupling.	Part No.	For				
		1600 0000	9000 0300	up to and including	9000 0313		



USB CO STEELS PVT LTD

Office : 73, Bentinck Street, Kolkata - 700 001

Website : www.usbcosteels.com

Email : rkejriwal@usbcosteels.com

Mobile : 9836014644

* Can be supplied if orders for 100 pieces are placed. Also, available in forged alloy steel, order for minimum 500 pieces acceptable.